



lighting today

Volume 2 | April - June 2022

Hospital Nova

Hospital Nova, located in Finland, is one of the most advanced and newest hospitals in the world, and one of the first cloud-based, fully monitored projects of its size. Helvar was proud to deliver the lighting control solution for the project. **p16**

RAVINTOLA

KIOSKI

HISSI

A



ON THE COVER
Hospital Nova in Jyväskylä, Finland.
Photography: Tuomas Uusheimo

OTHER TITLES BY
TRADE LINK MEDIA PTE LTD
(www.tradelinkmedia.biz)

Bathroom + Kitchen Today
Southeast Asia Building
Southeast Asia Construction
Security Solutions Today

CALL FOR SUBMISSIONS

Press releases, proposals for stories, and product development literature should be submitted by email to the editor at:
lighting@tradelinkmedia.com.sg

ASSOCIATE PUBLISHER
Eric Ooi
eric.ooi@tradelinkmedia.com.sg

EDITOR
Amita Natverlal
lighting@tradelinkmedia.com.sg

MARKETING MANAGER
Felix Ooi
felix.ooi@tradelinkmedia.com.sg

**HEAD OF GRAPHIC DEPARTMENT/
ADVERTISEMENT COORDINATOR**
Fawzeeah Yamin
fawzeeah@tradelinkmedia.com.sg

CIRCULATIONS EXECUTIVE
Yvonne Ooi
yvonne.ooi@tradelinkmedia.com.sg

LIGHTING TODAY IS PUBLISHED BY

TRADE LINK MEDIA PTE LTD
101 Lorong 23 Geylang
#06-04 Prosper House
Singapore 388399

For interest in advertising and advertorials, please attention your query via:
direct call: +65 6842 2580

ISSN 2345-7147 (Print) and
ISSN 2345-7155 (E-periodical)

This publication is published four times a year and available on the digital platform.

To download a free digital copy, visit lt.tradelinkmedia.biz.

DISCLAIMER

All advertisers and contributors must ensure all promotional material and editorial information submitted for all our publications, must be free from any infringement on patent rights, copyrights laws in every jurisdiction. Failure of which, they must be fully liable and accountable for legal consequences (if any) that may arise.

The editor reserves all right to omit, amend or alter press releases submitted for publication. The publisher and editor are unable to accept any liability for errors or omissions that may occur in this process, although every effort has been taken to ensure that all information is correct at the time of going to press. Edited articles or stories are returned to contributors for check on facts at the sole discretion of the editor. No portion of this publication may be reproduced in whole or part without written permission of the publisher. The editor reserves all rights to exclude or refuse submissions at any time without prior written or verbal notice if contributing parties do not provide complete text and supporting images at a minimum of 300dpi in .jpeg and .tiff format.

Dear Readers,

Hello and welcome back to another issue of *Lighting Today*. In volume 2, we showcase how lighting plays an important role in hospital environments. Proper and adequate lighting is crucial for both hospital staff and patients. Lighting can aid patient recovery and healing. It can also help hospital staff to perform their tasks with minimal or no errors. Check out the lighting solutions that were specified for the Nova Hospital and Poland Children's Health Centre. In the Smart Lighting section, we have a theme on human-centric lighting. It is a holistic approach on how lighting affects occupants' wellbeing, comfort and health. Read about how the handball club THW Kiel wanted to support the performance of the professional handball players in the best possible way with innovative lighting technologies. Lastly, don't miss the product showcase section. It is packed with some interesting lighting innovations. If you have any comments, drop me an email. Enjoy the issue!

Amita Natverlal
Editor

VOL 3 / 2022 TOPICS

- **Architectural Lighting:** Schools & Hotels
- **Smart Lighting & IoT:** Street Lights
- **Lighting Product Showcase:** Ambient Indoor & Outdoor Lighting, Task Lighting and Accent Lighting

12-15 April 2022**Hong Kong International Lighting Fair 2022**

Hong Kong SAR, China

Website: <https://event.hktdc.com/fair/hklightingfairse-en/HKTDC-Hong-Kong-International-Lighting-Fair-Spring-Edition>**9-12 June 2022****Guangzhou International Lighting Exhibition**

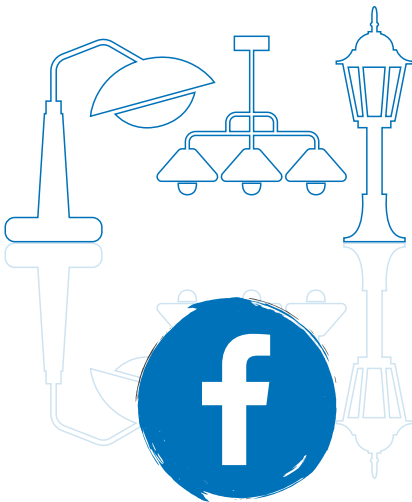
Guangzhou, China

Website: <https://guangzhou-international-lighting-exhibition.hk.messefrankfurt.com>**21-23 June 2022****Lightfair 2022**

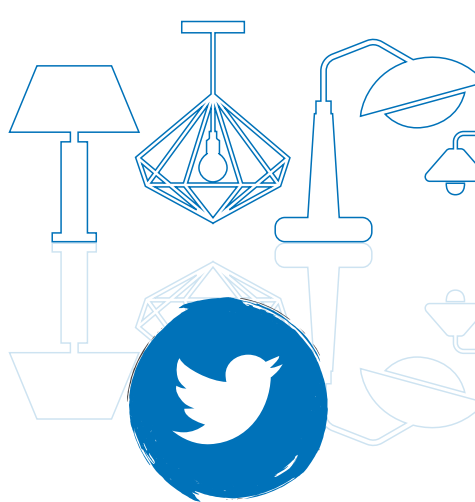
Las Vegas

Website: <https://www.lightfair.com/las-vegas-2022>**30 November -
2 December 2022****Thailand Lighting Fair 2022**

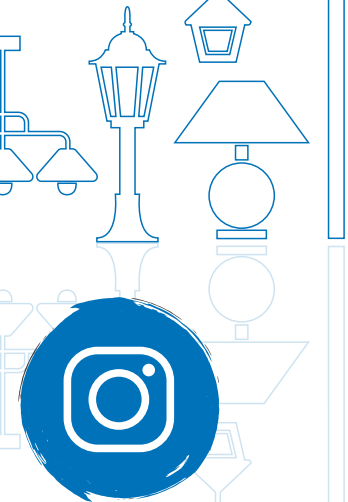
Bangkok, Thailand

Website: <https://thailandlightingfair.hk.messefrankfurt.com/bangkok/en.html>Follow us on **Social Media**

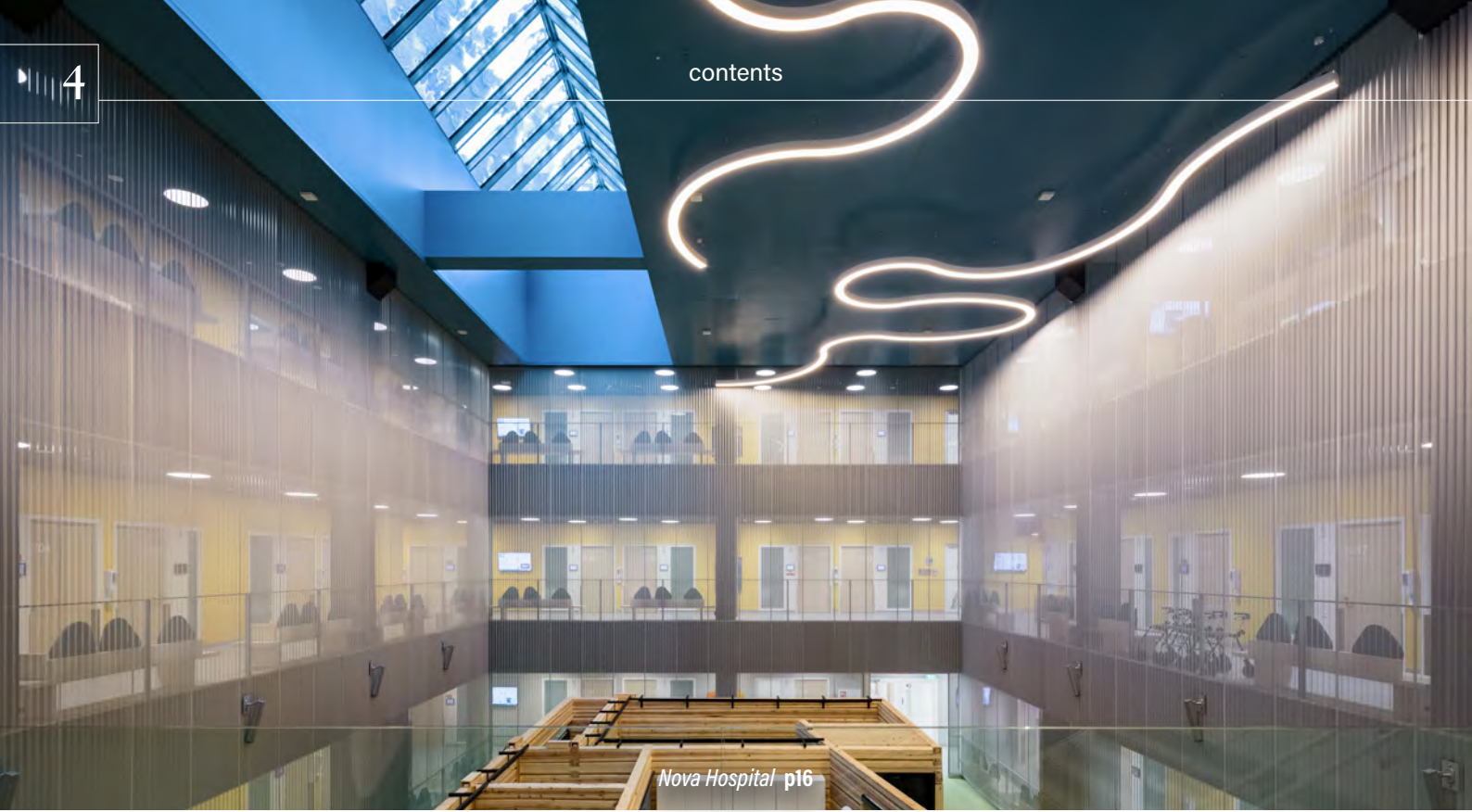
[www.facebook.com/
LightingToday](http://www.facebook.com/LightingToday)



[www.twitter.com/
LightingToday](http://www.twitter.com/LightingToday)



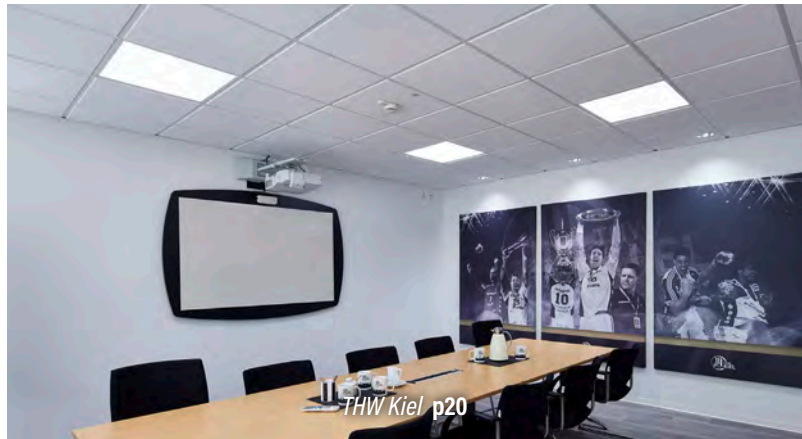
[www.instagram.com/
lightingtodaysg](http://www.instagram.com/lightingtodaysg)



Nova Hospital p16



Greater Poland Children's Health Centre p12



THW Kiel p20

contents

03 EVENTS CALENDAR

05 LIGHTING IN THE NEWS

ARCHITECTURAL LIGHTING - HEALTHCARE FACILITIES & INDUSTRIAL BUILDINGS

12 Greater Poland Children's Health Centre

16 Nova Hospital

SMART LIGHTING & IOT - HUMAN-CENTRIC LIGHTING

20 THW Kiel

22 PRODUCT SHOWCASE

Alistair Smyth joins zactrack International as Brand Manager

Paderborn, Germany – zactrack is pleased to announce that Alistair Smyth, a long-time veteran of the industry, has been hired as Brand Manager. After earning a bachelor's degree in aerospace engineering from Kingston University London, he worked for Vari-Lite, High End Systems, Christie Lites, A.C. Entertainment Technologies and Flashlight. Most recently, he was a Technical Sales Advisor at Elation, where he was responsible for product demonstrations, sales support and technical communication.

Alistair comments on his new role: "I am proud to join the Lightpower family of companies and be a member of the zactrack International team. I look forward to meeting our valued distributors, customers and users. The zactrack products are amazing and we believe they will revolutionize tracking in many areas of our industry. As part of the team here, we can work together to help promote this intuitive technology and bring it to a wider audience."

Stephan Saremba, Managing Director of zactrack International, said: "We are very happy to have Alistair on board now. Since zactrack International was established just last year, zactrack has been chosen for iconic projects like the ongoing Alanis Morissette 2021-2022 world tour or MJ the Musical on Broadway. We have also signed on several new distributors in key markets around the world, expanding our global service and support offering. With Alistair's industry experience and enthusiasm for the brand he will help put zactrack on many more stages around the world."



Alistair Smyth. Photo courtesy of zactrack International.

Obsidian Control Systems expands worldwide support team with new hires

Kerkrade, The Netherlands – Since its launch, Obsidian Control Systems has experienced sustained growth of its user base, along with a high demand for in-person ONYX console training. Obsidian is pleased to announce the expansion of our team with two experienced and knowledgeable members tasked with providing the support, programming advice and training capabilities Obsidian customers expect from a leading lighting controller brand.

Matthew Gerardi will lead Obsidian Control Systems' Technical Support division with focus on ONYX, NETRON and Capture, working out of Obsidian's headquarter office in Los Angeles. Matthew comes to Obsidian with an extensive background as a technical director and lighting technician and brings with him wide-ranging field experience with lighting control systems and AV networking across all major lighting control platforms. In his new role, Matthew will work alongside Obsidian users to evolve ONYX, and will focus on ONYX and NETRON training sessions throughout the US, in person and online.

Hector Rojo joins Obsidian's Latin American team to lead the ONYX support division for Mexico, Central and South America, along with other Spanish-speaking areas across the globe. Hector brings with him an extensive technical background as a lighting designer, lighting programmer and lighting technician on various console platforms, as well as DMX, Art-NET and sACN networking systems. Hector will



Hector Rojo (left) and Matthew Gerardi (right).

be based out of Elation Professional's Mexico City office.

"Support and training are essential to customer success and with the addition of Matthew and Hector to our team we are reinforcing our commitment to our user base," stated John Lopez, Channel Sales Manager at Obsidian Control Systems. "We are dedicated to leading the way in innovative technology, development, and support to provide a world-class lighting control experience."

Italian Design Brands signs a partnership with Axolight

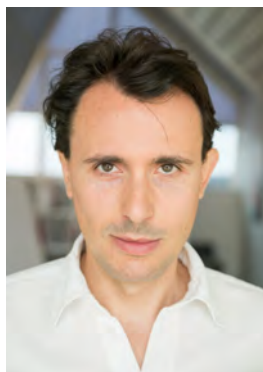
Milan, Italy – Italian Design Brands (IDB), the Italian hub of high-quality furniture and design, has concluded its eighth deal with the entrance of Axolight, a lighting company with headquarters in Italy and in the United States that designs and produces highly technical design lamps, aiming at combining the most contemporary lighting techniques with the artisanal manufacturing capabilities typical of the best made in Italy.

Giuseppe Scaturro, Managing Director of Axolight, not only will remain at the head of the company with full responsibility and operational independence, but will also remain a key shareholder. As successfully occurred in the previous deals of the Group, this approach will allow Scaturro – who in the last three years has engaged in a significant restructuring process to achieve a correct positioning of the brand Axolight on its reference market– to continue to lead the company’s ambitious growth plans. At the same time, the manager will be able to count on the support and synergies derived from belonging to a solid and well managed Group, with ambitious objectives such as the future listing on the Stock Exchange.

The deal has a significant strategic importance for Italian Design Brands, allowing the Group to further consolidate its international presence. Axolight, with headquarters in Scorzé (Venezia), boasts a strong presence abroad, with an export quota of approximately 85 percent of its revenue. The main market is north America, where the company is present with Axolight USA, based in Danbury (Connecticut) and 100 percent owned by Axolight.

The mission of Axolight is to create products able to synthesize the three main elements of its vision: design, technology, and functionality. Today, Axolight is among the best credited Italian companies in the decorative segment, as well as in the world of international projects for corporate and hospitality areas, where the concepts of design, technical reliability, and customer centric culture together represent the main competitive advantage. Google, Facebook, Amazon, Microsoft, Cisco, Pfizer, Novartis are only a few of the headquarters lit also with Axolight lighting fixtures.

Distinctive features of Axolight are the multifunctionality and multidimensionality of its creations, as well as the range and depth of the selection of suspension lamps: highly synergic elements with IDB’s current lighting proposal and with high potential for application, even more in the contract channel. Every single lamp, whether it is a standard or a bespoke production, is projected, developed, and tested by hand with the support of a network of selected and highly specialized local artisans. A strategic choice aimed at enhancing



Giuseppe Scaturro,
Managing Director of
Axolight. *Photo courtesy*
of Axolight.

made in Italy craftsmanship and creating a virtuous ecosystem with the companies that operate in the industry. The products are then assembled in Italy or in the US branch, according to the destination market.

With the entry of Axolight, the Group counts eight portfolio companies and enriches its offer in a strategic sector such as Lighting, where IDB already operates with Davide Groppi and Flexalighting. In the first semester 2021, the companies registered a growth of 74 percent compared to the same period of 2020 and of 39 percent compared to pre-pandemic 2019. Axolight’s international profile, its acquired experience in a relevant market such as North America and the vast know-how in the world of projects, conjugated with the

interchange, expertise, and experience between all the IDB companies, will allow the company and the Group to continue their growth, consolidating their experience and presence in the industry.

IDB’s role, targeting long-term expansion, will be to support the CEO Giuseppe Scaturro in the process of reinforcing the organization and the sales network of the company, in order to accelerate its development seizing the existing growth opportunities.

Andrea Sasso, Chairman and CEO di IDB, declared: “We are very happy to welcome Axolight in our Group. The story of Giuseppe Scaturro really impressed us: a man with a previous experience in finance who decides to embark on an entrepreneurial challenge in the world of lighting, that is remarkable. The enthusiasm of this entrepreneur-manager in pursuing ambitious goals conveys a great confidence for the future. We are certain that the work Scaturro has done in these years will bring further growth to the company.”

Giorgio Gobbi, Managing Director of IDB added: “We think this deal is very strategic for IDB. The range of Axolight

products is the perfect enrichment for our supply in the Lighting world and will allow us to be even more competitive in the contract business, in particular in corporate and hospitality projects, where Axolight’s characteristics and experience are key factors of success.”

Giuseppe Scaturro, Managing Director of Axolight declared: “The pool of opportunities that can be generated with the entry of Axolight in IDB is so ample that several joint operative activities – strategic, industrial and managerial – began even before signing the agreement that formalized our partnership. IDB’s industrial vision, wholly focused on the high-end design segment, and the managerial know-how with which the Group is able to support and facilitate the activity of each company, provide an extraordinary element for growth for Axolight.”



U-Light. *Photo courtesy of Axolight.*

Preciosa Lighting creates a dynamic lighting installation at Singapore Changi Airport Terminal 1

Crystal Valley, Czech Republic & Singapore – Changi Airport, known for its entertainment options to amuse waiting travellers and their collection of innovative design and floral installations, partnered with Preciosa Lighting to create a lighting installation for a newly refurbished area at Terminal 1 Departure / Transit Hall.

Sculptural light garden

The Preciosa team knew the installation had to be something outstanding. The lighting should have a strong narrative, rooted in the tropical garden theme characteristic of the airport interiors and all of Singapore. Garden Metamorphosis is a sculpture which blends in unique compositions, exploring the shapes and patterns of nature. It captures every moment of a garden's never-ending transformation. The installation is organic and fluid, featuring abstract shapes to trigger visitors' fantasies. Preciosa Lighting designer Anna Kralova was the lead designer on the project.

"This is the transformation that nature naturally undergoes," said Ms. Kralova. "Here, these leaves turn into butterflies which visually blend with the leaves. Just like in nature – when a butterfly sits on a flower or a leaf, it completely merges with it."

A bright touch of light

The installation is more than ten metres long and 9 metres wide. There are more than 650 hand blown crystal components including small and big butterflies and small and big single and double leaves. Each component is an original and handcrafted at the Preciosa factory in the Czech Republic. The metal base is champagne and polished brass for a warm feel. Component colours include clear crystal, frosted crystal, champagne, light pink, pink, and light and dark lustre.

Structurally stable yet light and airy

Preciosa Lighting's in-house R&D team had two challenges to tackle for this project. First was the programmable dynamic scenes, and the second was the project's location. "We wanted to figure out the best way to move and light the

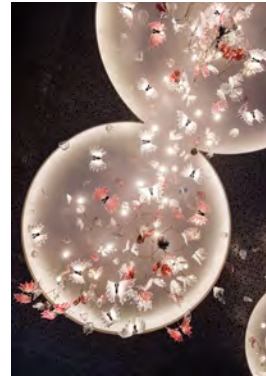


Designer Anna Kralova at work on Garden Metamorphosis. Photo courtesy of Preciosa Lighting.

butterflies," said Ondřej Dörfl, Senior Electrical Design Engineer. "The idea is that for a while, butterflies fly above the light fixture, then they settle (shine) and show us their crystal beauty. The next moment, they gradually light up and after a while they gradually and slowly go out again. I believe in the end we managed to give the lighting its soul."

To ensure the installation was structurally stable, the team figured out the best way to attach the crystal leaves to the metal branches, without comprising the look of the design.

The architecture and interior design was led by RSP Architects Planners &



More than 650 hand-blown components make up the installation. Photo courtesy of Preciosa Lighting.



Garden Metamorphosis at Changi Airport. Photo courtesy of Preciosa Lighting.

Engineers, Singapore. Preciosa Lighting worked with the main contractor, Takenaka Corporation, Singapore.



Garden Metamorphosis at Changi is more than 10 metres long. Photo courtesy of Preciosa Lighting.

LightJockey – the end of an era

Kerkrade, The Netherlands – Elation Professional's LightJockey is one of the longest available lighting control software solutions on the market. Now, after over two decades of service and with tens of thousands of systems in the market, the time has come for LightJockey to gracefully retire.

As ongoing security changes to Windows prevent LightJockey from functioning reliably, the decision was made to phase out the lighting control software with the release of Windows 11 in October. The last LightJockey kit has been sold and this iconic software – the starting point for many professionals in the business - will no longer evolve.

The transition to a new and modern software solution, however, is simple. LightJockey USB DMX hardware is recognized by ONYX, the innovative and easy-to-operate lighting control platform by Obsidian Control Systems.

Plug-and-play drivers unlock any of the devices to the ONYX NOVA license, which offers four universes of DMX, Art-Net or sACN support. Simply download ONYX, connect the LightJockey DMX adapter and enjoy limitless creative opportunities.



The Illuminating Engineering Society introduces Horticultural Lighting Standard



Photo courtesy of Illuminating Engineering Society.

New York, New York, USA – The Illuminating Engineering Society (IES) recently introduced ANSI/IES RP-45-21 Recommended Practice: Horticultural Lighting. This standard describes the differences between architectural and horticultural lighting design, so that lighting professionals will have the necessary information to translate their architectural lighting know-how into horticultural lighting practice.

“Horticultural lighting is a science in its own right, bridging horticulture, botany, and illumination engineering,” explained

Ian Ashdown, Horticultural Lighting Committee Chair.

“We wrote this document with one purpose in mind: to provide a framework for discussions between horticulturalists and lighting professionals.”

Included in the Lighting Applications Standards Collection and published in consensus by the IES Horticultural Lighting Committee, this document is essential for lighting professionals interested in horticultural lighting for greenhouses, indoor farms, and building atria.

For more information, visit www.ies.org.

Chauvet acquires Kino Flo

Sunrise, Florida, USA – In a move that will significantly expand its capabilities to serve the global film, studio, and broadcast markets, Chauvet today announced that it has acquired Kino Flo, a leader in LED lighting systems and colour science technologies. Kino Flo is a multi-award-winning manufacturer of lighting systems engineered for cinema and television production.

“This represents an important step for our company in our ongoing mission to expand our broadcast, studio and film lighting capabilities,” said Albert Chauvet, CEO of Chauvet. “Kino Flo has a longstanding tradition of innovation and a commitment to excellence, which makes the company an excellent fit with Chauvet’s own philosophy. We are excited to invest in the future of Kino Flo and build on their technologies, while adding resources to accelerate product development and commercialization.”



Albert Chauvet, CEO of Chauvet. *Photo provided by Chauvet.*

“Based on our shared longstanding commitment to our customers and cultural alignment, I am confident our customers will benefit from our new partnership,” said Frieder Hochheim, Founder of Kino Flo, who will continue

to lead Kino Flo. “The combined solutions from Kino Flo and Chauvet have limitless possibilities.”

Kino Flo will continue to serve its customers from its Burbank, California offices. Founded in 1987, Kino Flo has developed a series of colour technology innovations, and earned an award from the Academy of Motion Pictures Arts and Sciences for its development of cool, tube-based arrays with colour corrected tungsten and daylight balanced light. Kino Flo’s LED tubes, light panels and True Match® firmware dovetail with the extensive collection of CHAUVET Professional ellipsoidal, Fresnel, par, cyclorama and special effect fixtures that have become increasingly popular in broadcast applications.

“Our entire team looks forward to bringing Kino Flo’s product line and technology solutions to our global film, broadcast and livestream lighting customers,” said Chauvet.

GE Current, a Daintree company announces the opening of new learning institute in Hendersonville, NC

Cleveland, Ohio, USA – GE Current, a Daintree company, has announced the opening of its newly expanded and redesigned Institute in Hendersonville, North Carolina. The state-of-the-art learning centre will provide attendees with a cutting-edge educational and training experience that includes the latest in hands-on teaching tools and an impressive display of installed lighting and controls products.

The lighting design of the facility demonstrates the breadth of Current’s expanded architectural interior lighting brands. The Institute trainings will cover the full range of Current’s product portfolios, including indoor, outdoor and roadway lighting and Daintree® Wireless Controls.

“The Institute at Hendersonville represents Current’s ongoing commitment to our position as a leader in lighting industry education,” said Chip Taylor, Current’s chief commercial officer. “This significant investment in training facilities and supporting resources allows us to continue our legacy as a trusted partner to our industry associates.”

Located on the same campus as Current’s lighting fixture manufacturing plant in beautiful western North Carolina, the 8,500-square-foot educational facility has been fully renovated to include a central teaching auditorium, expanded classrooms and an inviting collaboration area for networking. Each interior space is equipped with the latest in audio-visual technology to provide a flexible and immersive live training experience, as well as enhanced virtual learning options.

A dedicated training staff will focus on providing a



GE Current, a Daintree company’s new learning institute in Hendersonville, NC. *Photo courtesy of Current.*

comprehensive curriculum that covers relevant and timely product technology, trends and compliance topics to meet the needs of Current’s valued customers and channel partners. Courses offering AIA continuing education credits will also be offered.

Hendersonville and the surrounding region are home to the Blue Ridge Mountains and a popular tourist destination thanks to the area’s beautiful scenery, a multitude of outdoor activities and an ever-growing list of nationally recognized craft breweries and wineries.

Aqua Creations – Centerpiece for Suzuki Showroom

Tel Aviv, Israel – Aqua Creations was commissioned by Suzuki to design the centerpiece for the new main branch and showroom in Rishon LeZion, Israel. Three Nana 200's fan out across two floors, sending a warm glow across the entire space.

The sculptural shape and Aqua's 'Flame' silk colour complement the aesthetics of the space, as well as the Japanese design elements that can be found throughout the showroom. The lighting fixtures are suspended amidst the central stairs, which at the ground floor is surrounded by a Japanese Zen garden.

Part of the Jewel Family, the Nana 200 is a mobile hanging sculptural light fixture that pays homage to the kinetic artworks of Alexander Calder. Movement is driven by the invisible air currents in your surroundings. Its five feather-like shades twist and turn in the breeze.



Image courtesy of Michael Shvadron for Aqua Creations.

Vijay Thaygarajoo joins Ayrton as regional sales manager for Asia Pacific



Vijay
Thaygarajoo.
Photo courtesy
of Ayrton.

Singapore – Ayrton is very happy to announce the further expansion of its international team with the appointment of Vijay Thaygarajoo as regional sales manager for Asia Pacific. The appointment takes effect from 1 February 2022.

Vijay brings over 10 years of industry experience in the region, working with Ayrton's local distributor and as regional sales manager for a number of industry manufacturers.

"I am very excited to be joining the amazing team at Ayrton," said Vijay. "As the RSM of Ayrton, I will be responsible for maintaining and building relationships with current distributors as well as appointing new distributors around the APAC region, with the aim of progressing and further strengthening the Ayrton brand and image in this part of the world.

"I've seen the quality of Ayrton lighting over the years and am very impressed with the full range of lighting fixtures they have. When the opportunity came along, I didn't think twice about joining them as I believe in the brand and couldn't wait to join the team. Ayrton is the future!"

"Vijay's experience makes him extremely well placed in his new role as our APAC regional sales manager and a valuable addition to the team," said Ayrton's global sales director, Michael Althaus. "To have our own regional representative working in tandem with our excellent local distributors is a great combination which will strengthen Ayrton's presence across the region and reinforce the level of service we are able to give our customers. We are very happy to have Vijay on the team!"

Proteus™ supports storytelling on stunning UAE 50th National Day Celebration



Photo: Nicolas Chavance

Dubai, UAE – Lighting Designer Bruno Poet recently turned to Elation Professional's Proteus™ line of IP65 luminaires to light the UAE's 50th National Day Celebration, a breathtaking and technically demanding show that beautifully chronicled the country's unique history and hopes for the future.

The ambitious Golden Jubilee spectacular took place in the remote and harsh terrain of the Hatta Mountains and was both technically bold and emotionally touching. Artistic Director and Designer was Es Devlin who worked with LarMac PROJECTS, the Official UAE 50th Celebration Producer. LarMac enlisted a team of 650 personnel to bring Devlin's vivid designs to life.

"Lighting National Day 50 was a thrilling challenge," lighting designer Poet commented.

"Es Devlin's show design was a sculptural form in an unbelievably beautiful setting on the Hatta reservoir surrounded by mountains. The lighting had to bring this sculpture to life and support the storytelling. During the performance, the sun set and night drew in so it was important to light the landscape to keep the mountains and the lake alive; it was essential to see the stunning environment we were performing in."

The vision, scale and spectacle of the Golden Jubilee show was nothing short of astounding. Centered on a giant rotating disc and sculpture floating in the waters of Hatta Dam, a major engineering feat in itself, the 36-minute show featured music and poetry, a dramatic light show with projection, drone-launched fireworks, and water displays, all wrapped in surround sound.

PRG provided around 1,000 lighting fixtures for the show, including Elation Proteus Hybrid™ and Proteus Maximus™ luminaires. Surrounded by water and exposed to the elements, the fixtures had to perform amidst a challenging environment.

"The extreme conditions at Hatta, combined with the extensive use of water screens meant that I had to find lighting fixtures that could work reliably in extremes of heat and cold and under a regular deluge of water," Poet remarked. "The rig

was in view of the audience so it needed to look clean and neat - we didn't want to have to cover the units with domes or other waterproofing."

Poet says the size and scale of the venue meant that he needed very bright sources that would register in the vast landscape. It was also important, he says, to have a consistent quality of light across all sources. "Everything had to be symmetrical and exact - there was nowhere to hide. For this reason, and also to save power, I was keen to base the rig on LED sources." He continues, "In addition, the lights needed to deliver scale and spectacle in response to the sound track, magnifying the energy of the music, and framing the stage design with elegant, geometric and sculptural rays of light."

Poet and the lighting team used 100 LED-based Proteus Maximus plated around the perimeter of the elliptical performance area, and 108 Maximus and 56 Proteus Hybrids on the horizon arc walkway to frame the main set.

"The Elation Proteus Hybrid and Maximus were an obvious choice because of their IP rating," Poet said, although he adds that he felt he was taking a bit of a chance as he had never used them before. "But I was blown away by the brightness, quality and reliability of the Elation Proteus Maximus - they worked consistently in unbelievably extreme conditions of heat, moisture, wind and dust. They were as bright as I had hoped, and had fantastic consistency of color and beam edge from unit to unit. They had the punch to work as narrow pencil beams to scythe through the air, but also the flexibility to make big wide sheets of light as well. They were truly remarkable units and there is no way we could have delivered the graphic air looks the production required without them."

The 50th National Day Celebration, which received widespread acclaim, will certainly go down as one of the more ambitious and visually impressive special events of the last many years. It debuted December 2, 2021, in front of a VIP audience and was broadcast around the UAE. Additional shows were performed from December 3-12, 2021.





Greater Poland Children's Health Centre

Poznan, Poland

PROJECT NAME

Greater Poland Children's Health Centre

PROJECT LOCATION

Poznań, Poland

PROJECT TYPE

Health Centre

CLIENT

Greater Poland Children's Health Centre

LIGHTING MANUFACTURER / SUPPLIER

Lena Lighting

COMPLETION

2022

PHOTOS

Courtesy of Lena Lighting



Lena Lighting has illuminated the Greater Poland Children's Health Centre in Poznań.

Over 7.5 thousand of Lena Lighting energy-saving LED luminaires have illuminated one of the most modern paediatric hospitals – the Greater Poland Children's Health Centre in Poznań.

The Greater Poland Children's Health Centre has been equipped with many innovative amenities, such as pneumatic mail or an automated pharmacy. The state-of-the-art technology – provided by company – has also been used to illuminate the facility. The hospital will be one of the most modern facilities of this type in Poland.

Lena Lighting products illuminate not only the interior of the building, but also the outdoor areas. In total, company has delivered over 7.5 thousand of its LED luminaires, including the specialised LABO luminaires for sterile hospital rooms, as well as company's flagship ones, such as the Tytan luminaire, or the Quest and Flato floodlights. There are also many eye-catching designs here, including Terra, Piatto or Arto luminaires.

The leitmotif of the Greater Poland Children's Health Centre is water and



the underwater world. The lighting had to fit not only into the atmosphere of the facility, but above all, was to ensure the required standards for functionality, lighting parameters and energy efficiency. Due to the nature of the investment,

it has been a particularly important project for Lena Lighting. Company representatives are very happy that Lena Lighting products will serve small patients of the Greater Poland Children's Health Centre in Poznań.





Nova Hospital in Finland is one of the most advanced hospitals in the world, and it was commended in the healthcare category of 2021 DALI Lighting Awards.



Hospital Nova

Jyväskylä, Finland

PROJECT NAME

Hospital Nova

PROJECT LOCATION

Jyväskylä, Finland

ARCHITECT

JKMM Architects

LIGHTING CONTROL SOLUTIONS

Helvar

ELECTRICAL DESIGN

Granlund Jyväskylä

THE PROJECT

330 Helvar Routers, over 23,000 devices, over 35,000 controlled DALI addresses. Project's total gross area is 106,000 square metres.

COMPLETION

2020

PHOTOGRAPHY

Tuomas Uusheimo



Helvar Imagine DALI solution controls all indoor, and outdoor lighting at Hospital Nova creating appropriately lit, wellbeing-supporting facilities.



At Hospital Nova, Helvar solutions and services are used to create intelligent spaces designed for wellbeing, efficiency and safety.

Hospital Nova, located in Finland, is one of the most advanced and newest hospitals in the world, and one of the first cloud-based, fully monitored projects of its size. Helvar was proud to deliver the lighting control solution for the project.

Hospital Nova was highly commended by the judges in the healthcare category at the 2021 DALI Lighting Awards. Judges recognised that patient and staff wellbeing is central to the lighting design.

Hospital Nova is among the largest hospital projects in Finland and the county's largest public investment. The design of the hospital began in 2011 and was completed in 2020. Hospital Nova benefits from 360 examination and reception rooms, 24 surgery rooms and 10 delivery rooms.

Helvar assisted in both the design and implementation phases. Hospital Nova wanted lighting that would improve patient comfort and staff work without comprising on energy efficiency. "People are always the starting point when we design our solutions. At Hospital Nova, Helvar solutions and services are used to create intelligent spaces designed for wellbeing which are easy to service and maintain with different systems working together seamlessly," explained Jukka Riikkula, Sales Director, Helvar.



Hospital Nova is installed with the latest Helvar Insights to support a people-centric service and understanding how their facilities are used.

Helvar's energy-saving system responds to both light level fluctuations and seasons. In this way, all of the refreshing and health-promoting features of good light were made available to Hospital Nova while at the same time creating appropriately lit, wellbeing-supporting facilities.

Nova Hospital has access to the full range of Helvar lighting control solutions, whether router-based or wireless and Helvar's expertise and experience in intelligent buildings' various requirements. "Such a solution has not been implemented so widely anywhere in Finland before. Because our system is freely programmable, the customer can tailor what they want from the lighting. We can bring out everything that can be accomplished with modern intelligent lighting control and automation," expressed Jukka Riikkula.

"Helvar offers us great tools for managing lighting. One of the greatest benefits is having an immediate overall view of the system with Helvar Insights. The hospital floorplan is also integrated in Insights, so if we have let's say a driver failure, Insights shows me exactly where it is located, which saves hours searching time. I know right away, if a router is down or there is a ballast offline. Overall, our maintenance has become more efficient with Insights, and most of it can be done before users or patients have even noticed anything," said Antti Lehtinen, Electrician, Hospital Nova.

The hospital is installed with the latest Helvar Insights, which automatically monitors the system's status 24/7 and notifies maintenance engineers of any faults that require attention.

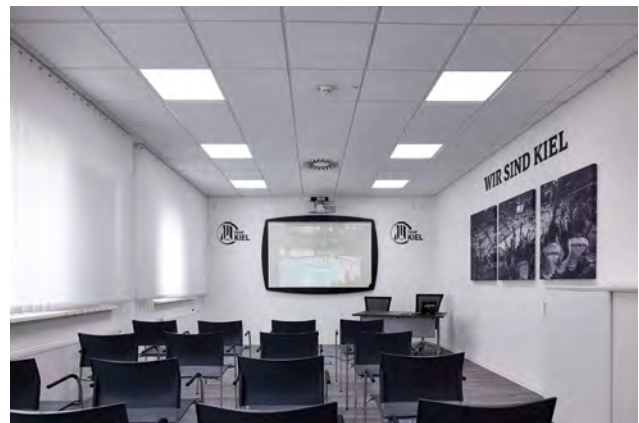


Helvar's energy-saving system responds to both light level fluctuations and seasons.

A victory for well-being with BIOLUX HCL system



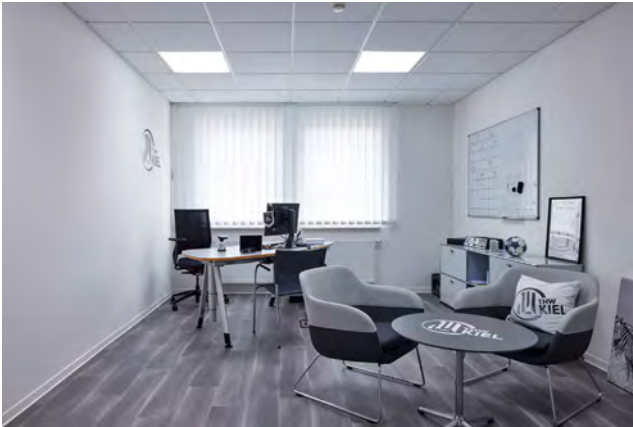
Concentration, vitality and performance are also a question of suitable lighting in sports. With Human Centric Lighting, LEDVANCE provides lighting technology that is oriented towards people and creates ideal conditions for sporting highlights for the handball champions of THW Kiel thanks to the BIOLUX HCL system.



The Challenge

THW Kiel is Germany's leading team in the international sport of professional handball. The focus of daily activities is therefore on the performance and well-being of the handball team. One factor in this is the lighting of the training centre and office building of the handball club in Altenholz. Innovative lighting solutions are therefore to be used to increase the lighting quality in the video room of the training centre and in the meeting room of the administration building, among other rooms, and to implement a lighting profile that can be flexibly adapted to individual needs.





The Solution

THW Kiel has entered into a lighting partnership with LEDVANCE. Their goal is to support the performance of the professional handball players in the best possible way with innovative lighting technologies. In a first step, the video room of the training centre and the meeting room as well as the management office in the office building of the handball club have been equipped with the BIOLUX HCL system from LEDVANCE.

The BIOLUX system automatically adjusts the lighting in the preset “NATURAL” light profile to the course of daylight and also allows trainers and players to use rotary control unit switches to adjust the lighting individually and dynamically to the respective lighting requirements in the room.

The Benefits

The PANEL luminaires of the BIOLUX system from LEDVANCE provide significantly improved brightness and lighting quality – and the individually adjustable lighting profiles ensure a perfect lighting environment at all times. For example, the “FOCUS” light profile promotes the concentration of players on the next opponent during tactics meetings in the video room, while the “RELAX” light profile in the meeting room ensures a relaxed atmosphere at events or during breaks between training sessions. An additional advantage of the BIOLUX HCL system is that it is easy to install and simple and user-friendly to operate.

Summary

The handball club THW Kiel and LEDVANCE have entered into a partnership to successfully harmonize innovative lighting technologies with the requirements of top-class sports. To this purpose, LEDVANCE has installed the BIOLUX HCL system in selected rooms of the training centre and the office building of THW Kiel in Altenholz as a first step. However, Human Centric Lighting does not only increase the quality of light. The available different lighting profiles also make it possible to create a lighting scenario that is perfectly adapted to the respective occasion.

PROJECT DATA

Project Name: THW Kiel
Project Location: Altenholz, Germany
Project Type: Sports Facility
Client: THW Kiel
Lighting Manufacturer / Supplier: Ledvance
Completion: 2021
Photo Source: LEDVANCE

Claypaky announces the launch of Sinfonya Profile 600, first of a new family of LED fixtures, exclusively designed for Theatre applications

Seriate, Italy – Claypaky announced the launch of its brand new, low noise LED based fixture exclusively designed for Theatre applications. Sinfonya Profile 600 is revolutionary and contains a host of new features that increase the performance levels dramatically on previous models on the market.

It is stylish, compact, and packed full of new technology. Theatres are demanding applications that require extremely low noise operation, very high quality of light and control along with precision of re-positioning. The Claypaky new range meets those needs and provides brand new levels of performance that were simply not possible before.

Most of the LED Theatre fixtures on the market have been mostly recycled from touring moving heads and adapted for theatre use. Not so with Sinfonya. This was a landmark decision and project to design the best fixture possible completely from scratch. Based on extensive customer feedback and input the team have been working away and managed to create a beautiful fixture that outperforms the best on the market.

Compacting so much new technology into a new body was a challenge but it has been achieved with spectacular results. The goal was to have a discreet form factor that can be used both on lighting rigs in theatres but equally sits well in the small niches around the stage frame. These were previously difficult places to mount fixtures, mainly due to their size. Crucially, all these customer demands were incorporated in a stunning new product design that is sleek and modern. The precision of the beam control is amazing, offering outputs from 5° to 60° coverage on stage.

TONEDOWN™ is the products flagship feature. Claypaky started with a fresh design to enable true silent operation on stage, achieved by redesigning the cooling system. Even at full output the noise is just 27db, a level impossible to achieve before. In addition to this, the fan has been taken out of the base. This reduces noise even further on stage and removes black noise from other frequencies that can sometime be annoying. TONEDOWN is a feature

that was impossible to achieve before and gives a huge scope for designers and theatre directors to incorporate stunning new choreography and performance aspects.

Another technology first for Sinfonya is the use of ACCUFRAME™. A unique new framing system using two focal planes. We have used four planes ourselves for many years until our engineers discovered a new way to improve the performance. Saving time in programming and re-focusing was a key request from designers. Our team found a new way to do this and dramatically improve performance at the same time. It is 40 times more precise than traditional framing systems. This gives limitless scope and possibilities on stage.

Claypaky have designed a new proprietary Optical system that gives ultra-high efficiency and precision. By improving the performance, we can increase the aspect ratio to 1:12 giving us a true 5 to 60-degree beam angle potential on stage. This feature allows for a greater flexibility of use in large theatres and small ones where the low height may be an issue. Sinfonya can be used now in a wider variety of venues without loss of performance in the beam for white or colors.

Claypaky new, sophisticated firmware gives us precise control over the beam in our multicolor engine. This provides vibrant and rich colors optimized for the stage or TV with high CRI and TLCI levels. It's much simpler to install and operate saving time and controls the Sinfonya's five-color light engine precisely. More importantly the high control of the engine means the quality of light in the beam is exceptional. All this is possible thanks to the special firmware algorithm, developed internally by Claypaky.

Using the new Calibration feature in conjunction with the Claypaky CloudIO software you can easily align any fixtures on stage for a performance to the same light output and color temperature levels. Even older fixtures can have the color sampled and measured before being imported using the "digital filter option" and replicated in Sinfonya so that they all match perfectly to give unparalleled



Photo provided by Claypaky.

consistency on stage.

"We listened to the market and designed a new fixture just for them," said Product Portfolio Manager Giovanni Zucchinali. "It is the first pure theatre fixture for Claypaky, we wanted it to be special and we are thrilled with its performance" he says. "It definitely puts down a marker to the rest of the industry and to have a fixture with such smooth control at 30db is incredible, we are sure it will be welcomed by the market and can't wait to hear customer feedback."

Sinfonya includes a host of trademarked and protected technology that is seen across the Claypaky range. The "Absolute Position" of Pan and Tilt is the first on the market. This feature will save lots of time for designers on stage. Sometimes during a performance, a fixture in a series may need re-setting, it happens it's just life. This can be awkward and visible as the fixtures scrolls through its set up process to find its zero point and be able to join in again with the sequencing and performance.

"Absolute Position" is a massive step forwards in terms of lowering audience distraction because of a clever sensor in the head. This signals where the fixture is in the cycle meaning the audience do not see one fixture turning and swirling to distract them from the show as it tries to find the re-set point. This new system gives also a much higher precision in term of re-positioning, feature that will be really appreciate since the time for re-focusing before the show is always limited.

Leda, the feminine side of LED

Leda is a collection of modular and adjustable lighting fixture: a string, a necklace of light that decorates rooms like a precious jewel adorns a woman's neck.

The myth of Leda and the Swan lives again in a new combination between poetry and technology, being the light source transformed into a feminine entity with a flexible and enveloping look.



Photo credit: Karman Italia

The lithe curves of Leda lighting collection remind those of the swan's neck, variable geometries that can be assembled at will.

Its structure is made of cylindrical bars and small spheres in gold or black anodized aluminum alternating, ringed like pearls on a thread that supports a LED strip wrapped in a

transparent and flexible silicone tube.

Customizable according to the space where it will be set, Leda is a chain that binds and decorates, enclosing universal symbols, alluding to the fascinating idea of circularity, to an archetypal ornament of elegance and beauty.

Installable in all directions, Leda can be used indoors or outdoors as a suspension, floor lamp, or lighting system, adorning and illuminating rooms, porches, gardens and terraces with gracefulness. It can be further transformed thanks to a small metal slot that allows you to define its arrangement and shape as you wish.

Colour: Black or golden

Material: cylindrical bars alternated to golden or black painted anodized aluminium balls. FLEX LED in white soft touch silicone.

Bulbs: strip led 14,4W

Bars Dimensions (two available sizes):

Flex led ø23mm L100cm

Use: Indoor and outdoor

Fluence launches Wireless Flex Dimming, enabling scalable, faster lighting control installation for commercial growers

Austin, Texas, USA – Fluence by OSRAM (Fluence), a leading global provider of energy-efficient LED lighting solutions for commercial cannabis and food production, launched the newest addition to its innovative lighting controls portfolio: Wireless Flex Dimming. By leveraging state-of-the-art, qualified Bluetooth mesh technology enabled by SILVAIR, Wireless Flex Dimming allows Fluence luminaires to dim light levels wirelessly using any industry-standard 0-10V dimmer or environmental controller.

Wireless Flex Dimming offers growers an easy and cost-effective solution to scale operations from a single room to thousands of lights per installation. The new controls enable growers to add fixtures or reconfigure lighting control zones via a mobile app without a costly lift or electrician.

“Large commercial growers leverage sophisticated automation systems to control their environmental parameters – including light intensity and light duration,” said Jordon Musser, Chief Product Officer for Fluence.

“Wireless Flex Dimming enables facility managers to connect Fluence lighting systems to the grower's preferred climate management system while reducing installation time and complexity as well as total solution cost. With Wireless Flex Dimming, growers can implement advanced lighting control strategies that maximize plant growth and quality while minimizing operating costs.”

By offering Wireless Flex Dimming to commercial growers, Fluence is further optimizing the retrofitting process from legacy high-pressure sodium (HPS) systems to LEDs. A typical HPS system is limited in its dimming capabilities, unlike LED technology. However, when retrofitting HPS with LED, adding dimming cables to the existing structure can



Image courtesy of Fluence.

be cost prohibitive, leaving many growers with sub-optimized LED installations that cannot be dimmed. With Wireless Flex Dimming, cultivators can unlock the full benefits of high-precision, wire-free dimming control.

“Introducing Wireless Flex Dimming into our product portfolio reinforces our commitment to empowering growers with flexible, customizable lighting solutions that meet the needs of any cultivation environment,” said David Cohen, CEO of Fluence. “With the power to easily and cost-effectively integrate dimming capabilities into a farm, growers will fully embrace LEDs' unique capability to swiftly adjust to a crop or environment's demands.”

As a leading provider of advanced technology solutions for the horticulture industry, Fluence prioritizes security for its wireless solutions. Wireless Flex Dimming has been awarded PSA Certified™ Level 1 (an independent measurement of security best practice spearheaded by Arm) from Riscure. PSA Certified is recognized by the DesignLights Consortium as an approved cybersecurity standard for networked lighting control systems.

Proteus Excalibur™ launches as the 21st Century's ultimate searchlight effect

Los Angeles, California, USA – The Proteus Excalibur™ from Elation Professional is a stunningly powerful IP65 beam moving head fixture set to assume the role as the lighting industry's new 21st Century searchlight.

The newest member in Elation's industry-leading Proteus range of IP65 automated fixtures, Excalibur's extreme power, long throw beam and wide front aperture make it perfect for creating aerial light columns, sweeping beams, throws of CMY colour, and prismatic/air FX rivaling existing Xenon searchlights.

Capable of creating effects as magical as its legendary namesake, the Proteus Excalibur is ideally suited for theme parks, cruise ships, outdoor special events, large-scale shows and concerts, or any situation where a massive beam or very powerful prism and flower effects are required.

Cuts through the sky

Excalibur is the brightest IP65 full-featured beam fixture ever created, producing up to 200,000 lux at 20 metres (7500 lux at 100 metres), an incredible light output from a surprisingly compact, and fast, body.

Rivaling existing Xenon searchlights and sky trackers, the Excalibur's extremely narrow 0.8° beam ensures the fixture cuts effortlessly through the sky and is visible at great distances. The intense beam projects from an ultra-wide 260mm front lens as a massive column of solid, attention-grabbing light, a towering beacon that is impossible to miss.

Design options

A wide array of gobos (8 interchangeable plus a 17-position static wheel) and prism overlays (4- and 8-facet) allow for a large variety of dynamic sky animations that add excitement and draw attention to any event. The upcoming integrated sky animation system allows the Excalibur to operate impressive aerial shows without needing an external DMX controller.

The Excalibur offers full CMY colour mixing plus 14 dichroic colours including CTO and UV. With its incredible light intensity, all CMY colours remain strong and vibrant, even when fully saturated.

Beam control through a precise internal focus lens provides crisp projection without optical errors. Dual variable frosts allow for softening of the beam when required and a remote-controlled Expander lens widens the beam to approximately 3.5 degrees for an even fuller look.

FLEX lamp efficiency

The Proteus Excalibur uses Philips' highly efficient FLEX lamp technology for long lamp life, lower power consumption and reduced fixture maintenance. The discharge lamp/ballast package produces an impressively high output for such a compact fixture while performance remains resourcefully economical with a lamp life of up to 4,000 hours.

The Philips Platinum 500 FLEX (550W) lamp is dimmable via the internal ballast, which not only dims the lamp electronically but offers a Hibernation Mode that reduces power to the lamp when not in use, resulting in lower power consumption. The lower internal heat produced extends the life of not only the lamp but all internal components of the fixture.

A new standard

The Excalibur supports DMX, RDM, Art-NET, and sACN protocols and is naturally outfitted with all the professional features and IP65 connections that designers have come to expect from a Proteus luminaire. With unprecedented power and a full array of professional design features, the Proteus Excalibur sets a new standard in IP65 beam moving head fixtures.



FABRILum delivers exceptional lighting and unmatched acoustic performance with no compromises

Vancouver, BC Canada – Responding to the substantial increase in market awareness of the value of acoustic lighting, Cooledge introduces its new line of FABRILum architectural acoustic luminaires. These fully featured luminaires combine the exceptional quality of immersive illumination that enables the feeling of natural light in retail spaces and corporate environments with acoustic performance on a par with the best passive acoustic materials to deliver design solutions that don't require a compromise between great lighting and reducing noise pollution – especially in open ceiling spaces.

What sets FABRILum apart is the approach Cooledge has taken to designing the product. Some alternative products simply add sound absorbing acoustic material to the outside of traditional linear luminaires without sufficient surface area to provide significant noise



reduction, thus requiring the use of additional passive baffles that increase cost and ceiling clutter. Others start with acoustic panels and add light fixtures that

struggle to provide suitable illumination in large spaces. By contrast, Cooledge designed FABRILum from the ground up to fully address the need to provide exceptional illumination in open spaces while taking advantage of a large format to integrate materials that deliver true acoustic performance without the need for additional baffles or panels.

Cooledge also incorporated features such as a removable fabric diffuser, increased efficacy, and a clean architectural finish that doesn't require additional trim to complement a full range of colour temperatures, including tunable white, and a selection of light output options specifically targeted at illuminating open ceiling spaces.

And perhaps uniquely to Cooledge, the improved performance of FABRILum with enhanced acoustic capability comes at an even more competitive price than its groundbreaking FABRICated Luminaires.

With the addition of FABRILum, Cooledge has expanded its luminous ceiling portfolio to address an even wider range of applications and budgets from full turnkey Specialty Illumination Solutions that include installation, the widest range of large format luminaires in the industry with FABRILum, FABRIColor, FABRICated Luminaires and the LumiScapes by Cooledge <italics>LumiScapes</italics> line featuring FABRICore, and Lighting Systems, the market leader for illuminating large areas incorporating a variety of architectural materials.



Luminus expands COB portfolio with the launch of new smooth white COB Series

Sunnyvale, California, USA – Luminus Devices has expanded its portfolio of COB arrays with the launch and immediate availability of a new 95 CRI minimum, Smooth White COB series designed for spotlights, downlights, museum, hospitality, and architectural lighting applications. These new LED arrays offer excellent uniformity and colour over angle consistency, as well as exceptional long-term colour stability.

Smooth White Series COB LED arrays at a glance

- 95 CRI minimum with R1 through R16, all above 90
- R9-97 typical for vivid reds and natural skin tones
- TM-30-15 Rf=94, Rg=99
- >10% higher lumens/watt vs. competitors' wide spectrum products
- No near UV emission and low blue
- High melanopic ratios for healthy, daytime human-centric lighting
- 2700K, 3000K, 3500K, 4000K, 5000K options
- 5 LES options from 6mm to 22mm



Photo courtesy of Luminus.

David Davito, COB Product Line Director, Illumination at Luminus, highlights: “Luminus continues to lead the COB industry with a stunning new quality-of-light solution for low blue, broad-spectrum, directional light sources. Building on our innovative Perfect White technology, Luminus engineers created an even more natural spectral response curve to mirror conventional halogen light sources while optimizing lumen output, vivid colour rendering and human-centric characteristics. Smooth White comes without the UV found in competitors' solutions while establishing a higher bar for efficacy.”

This product line is now available through Luminus' authorized distributors.

Our magazines are on issue.
Read them today.

Volume 1 | January - March 2022

ON THE COVER
SEB Bank
The world-class lighting in the new SEB Bank administrative building in Milan, Italy, is the first project of Gaudin, UAE. The building was awarded with one of the most elaborate awards of creating the mood of the space - lighting p32

ISSUE | Lighting News | Lighting Projects | Smart Lighting Projects | Product Showcase

ISSUE | Lighting News | Lighting Projects (Stage & Event Lighting) | Product Showcase

ISSUE | Lighting News | Architectural Lighting (Commercial & Retail) | Smart Lighting & IoT (Homes) | Product Showcase

issuu.com/lightingtoday

Earthtronics expands High Bay Natural White LED series



Photo courtesy of Earthtronics.

Norton Shores, Michigan, USA – Earthtronics has introduced its new Natural White High Bay LED Series that offers energy efficiency with reduced glare to provide visual comfort in warehouse and manufacturing environments.

The EarthTronics high bay LED fixture product line includes a long list of Natural White 4000K fixtures and Daylight 5000K fixtures. These products are engineered to maintain energy efficiency while providing 80+ CRI quality of light for improved visual acuity no matter which light source is specified for the application.

Available in both linear and UFO product lines, the Natural White High Bay LED Series offers a wide range of light levels from 13,000 to 44,000 lumens. The series expansion includes driver options for 120-277V, 120-347V and 347-480V operation. All EarthTronics High Bay Series fixtures feature 0 – 10V dimming which works with customised controls for use in daylight harvesting to meet specific energy codes.

The Natural White High Bay LED Linear Series is available with an integral multifunctional sensor and accepts external sensors with capabilities ranging from simple occupancy sensing to group mesh control. The UFO Series features an easy “twist” installation multifunctional sensor and is equipped with 12VDC for powering networked lighting controls.

The Natural White High Bay LED Series is built to perform in extreme temperature ranges, operating from 135°F down to -40°F. These fixtures are approved by the Design Lights Consortium (DLC), are UL and ETL listed for use in the USA and Canada. This new LED series has a performance life exceeding 90,000 hours.

ETC launches Cyberlight LED

Middleton, Wisconsin, USA – ETC is pleased to introduce Cyberlight LED, a moving mirror fixture born from industry feedback and built in Austin, Texas. Cyberlight LED surpasses moving head luminaires in a variety of uses including high-speed pan / tilt movement and the ability to hide lighting fixtures in permanent installations. Customers with existing mirror fixtures in the themed entertainment market and elsewhere can retrofit those products with Cyberlight LED for more energy-efficient operation and service. The 470 W Bright White LED engine and the high-quality optical system delivers 12,750 field lumens with 90+ CRI for superior colour rendering capabilities. A full complement of features are included on Cyberlight LED for creative design possibilities, including colour mixing plus colour wheel, dual rotating pattern wheels, zoom, focus, iris, prism, and diffusion.

Automated Lighting Product Manager Matt Stoner commented, “The lighting industry has been approaching us for years regarding an LED version of the Cyberlight. We took this opportunity to bring the entire fixture up to date with modern automated luminaire technology. By introducing a smaller gate size, we have provided a fixture with a much broader feature set, wider zoom range, and encoded pan and tilt system. In addition, the fixture includes a transferable LED engine, and a maintenance design that prioritizes longevity and precision.”

Themed Environment Specialist Scott O’Donnell said, “The super-fast speed of the Cyberlight is beyond any other fixture in the market. And since you can neatly stow the fixture away in the décor, Cyberlight is exactly the kind of light needed to create a dazzling themed environment. What an awesome fixture!”



Photo credit: ETC

Precise distance measurement – ams OSRAM launches world's smallest multi-zone dToF modules

Premstaetten, Austria – ams OSRAM, a global leader in optical solutions, is expanding its portfolio of dToF modules with three new devices for multi-zone and multi-object detection with a wider field-of-view (FoV) and extended range. dToF sensors are a critical technology, used in a wide range of industrial and home or business automation applications. Industrial and in-home robots require sophisticated systems to detect their environment to ensure they are operating in a safe manner. The multi-zone dToF modules TMF8820, TMF8821 and TMF8828 from ams OSRAM divide their detection area into multiple zones to collect more and higher quality information. As a result, automated robots gain more “sensory awareness”, enabling early detection of potential obstacles. System manufacturers also benefit from the compact design and ease of integration of the new modules.

Robots are taking over more and more tasks not only in application areas such as warehouse automation, but also in the home. Special ToF systems are used to enable these robots to maneuver



ams OSRAM expands its portfolio for time-of-flight modules with TMF8820, TMF8821 and TMF8828. Picture: ams

around unhindered, enabling them to navigate their environment. For example, vacuum cleaning robots recognize an object in their immediate surroundings and move around the obstacle. ams OSRAM's new dToF modules allow precise distance measurement.

“TMF8820, TMF8821 and TMF8828 devices report accurate distance measurements for multiple objects across a number of detection zones. This provides system manufacturers with much more information of what is happening in the environment thanks to the sensor

that can see and make the appropriate decisions,” said David Smith, Marketing Manager at ams OSRAM.

The TMF8820 dToF module divides the FoV into 3x3 or 9 individual detection zones, the TMF8821 into 4x4 or 16 individual detection zones and the TMF8828 into 8x8 or 64 individual detection zones. With multi-zone detection, it is possible to identify where an object is located within the sensors FoV. These new devices feature a dynamically adjustable FoV up to 63°, enabling customers to select either a narrow or wide FoV to meet their application needs. All three dToF modules have a detection range from one centimetre up to five metres. The modules combine a 940 nm Vertical Cavity Surface Emitting Laser (VCSEL), a sensitive single photon avalanche photo diode (SPAD) detector array with matching multi-lens optics, and an on-chip microcontroller for histogram processing in one device. Thanks to the compact dimensions of 2.0 mm x 4.6 mm x 1.4 mm, the modules are the smallest multi-zone dToF modules available on the market.



Thanks to the division of the field of view into several zones, obstacles in the immediate vicinity of the robot can be precisely detected.

Picture: ams

SUBSCRIPTION FORM

Email us at info@tradelinkmedia.com.sg

PRINT

Please (✓) tick in the boxes.



Southeast Asia Building
Since 1974



Southeast Asia Construction
Since 1994

1 year (6 issues) per magazine

Singapore	SGD\$60.00
Malaysia / Brunei	SGD\$105.00
Asia	SGD\$155.00
America, Europe	SGD\$185.00
Japan, Australia, New Zealand	SGD\$185.00
Middle East	SGD\$185.00



Bathroom + Kitchen Today
Since 2001

1 year (4 issues) per magazine

Singapore	SGD\$32.00
Malaysia / Brunei	SGD\$70.00
Asia	SGD\$85.00
America, Europe	SGD\$135.00
Japan, Australia, New Zealand	SGD\$135.00
Middle East	SGD\$135.00

DIGITAL



Lighting Today
Since 2002

Lighting Today

is available on digital platform.
To download free PDF copy,
please visit:

<http://lt.tradelinkmedia.biz>



Security Solutions Today
Since 1992

Security Solutions Today

is available on digital platform.
To download free PDF copy,
please visit:

<http://sst.tradelinkmedia.biz>

Personal Particulars

Name: _____

Position: _____

Company: _____

Address: _____

Tel: _____ Fax: _____

E-Mail: _____

IMPORTANT

Please commence my subscription in
_____ (month/year)

Professionals (choose one):

- | | | | |
|---|--|--|--|
| <input type="checkbox"/> Architect | <input type="checkbox"/> Landscape Architect | <input type="checkbox"/> Interior Designer | <input type="checkbox"/> Developer/Owner |
| <input type="checkbox"/> Property Manager | <input type="checkbox"/> Manufacturer/Supplier | <input type="checkbox"/> Engineer | <input type="checkbox"/> Others |

I am sending a cheque/bank draft payable to:

Trade Link Media Pte Ltd, 101 Lorong 23, Geylang, #06-04, Prosper House, Singapore 388399

Co. Reg. No: 199204277K * GST inclusive (GST Reg. No: M2-0108708-2)

Please charge my credit card (circle one): Amex / Diner's Club

Card Number: _____ Expiry Date: _____

Name of Card Holder: _____ Signature: _____



ADVERTISE WITH US TODAY!

Email us at info@tradelinkmedia.com.sg



Scan to visit our website

